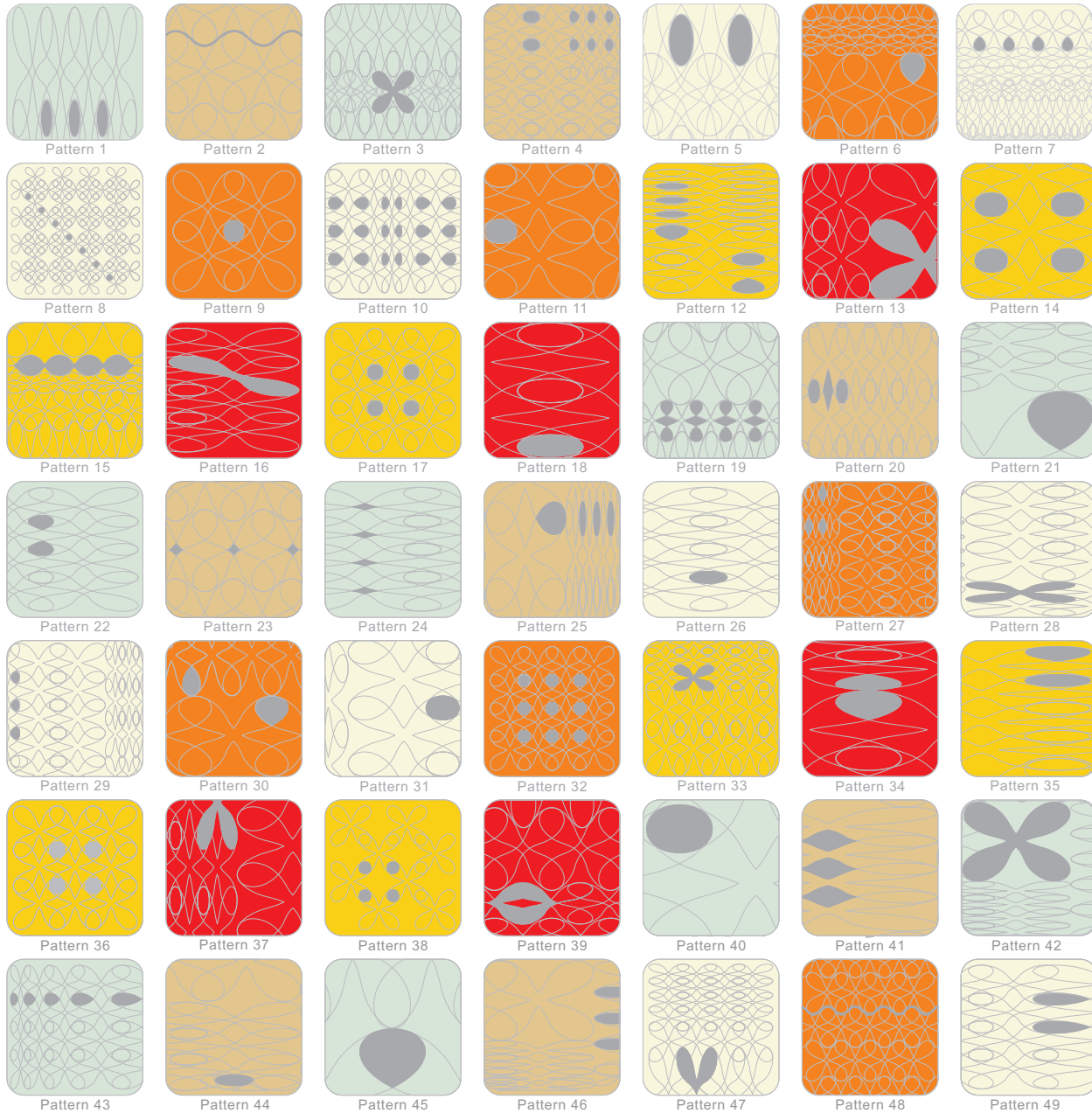


maggie orth

Petal Pusher

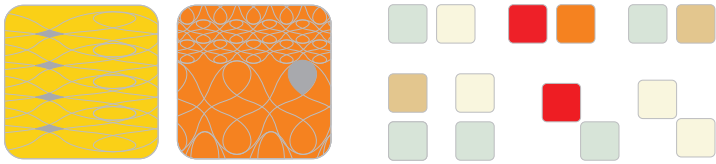
pattern and variation guide



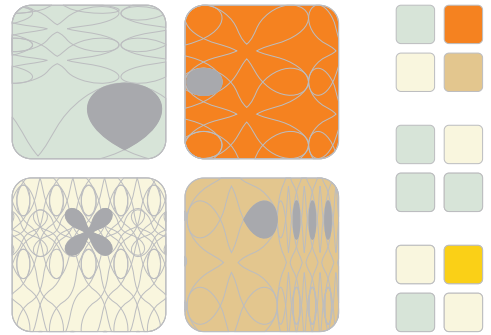
Petal Pusher is an interactive textile and light installation that explores the hidden electrical and transmissive properties of textiles. Each pattern is embroidered on wool felt and tufted with electronic yarns. By touching the tufted area of each pattern, the felt and embroidered yarns are illuminated from behind, revealing the light transmissive properties of the textile. Color variation and reflection change as different panels are illuminated. 49 unique patterns derived from a single motif are available, in numerous configurations. Limited edition of 12 of each pattern.

Wool felt, machine embroidered rayon yarns, hand tufted conductive yarns, acrylic, lamp and electrical parts.
Individual units: 11" x 11".

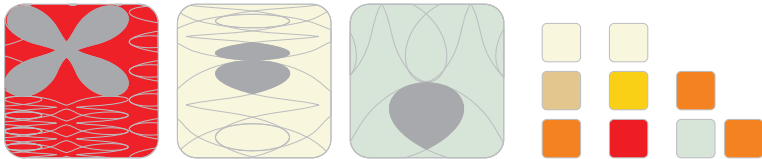
two



four

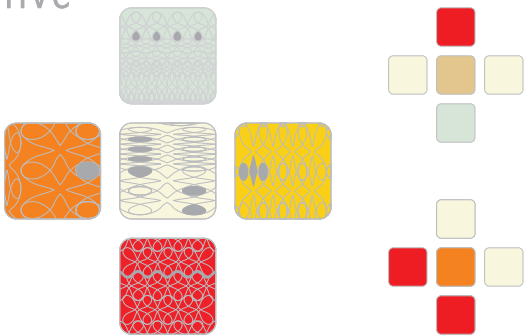


three

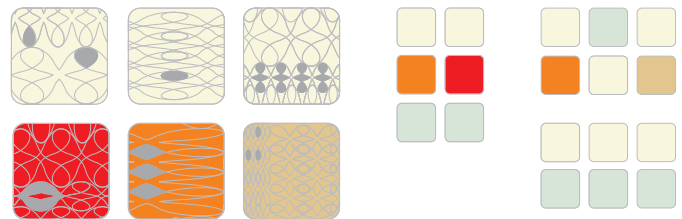


Petal Pusher can be designed in myriad numbers of modular configurations of size, color and pattern. Select from our recommended configurations or tell us your favorite colors and patterns and let us customize an arrangement for you.

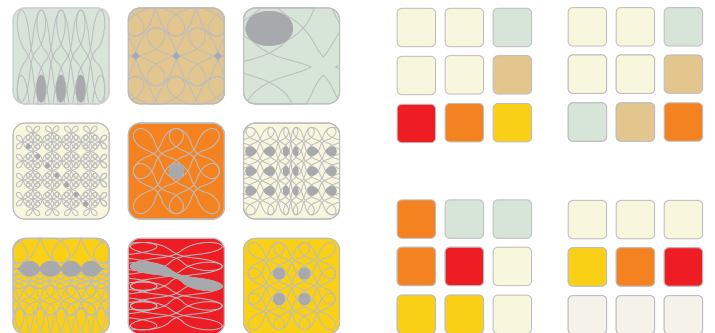
five



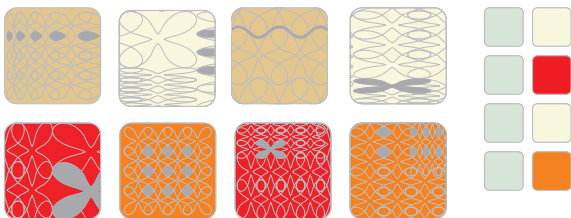
six



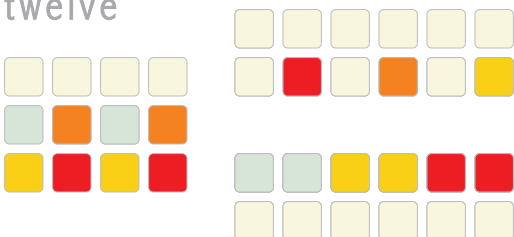
nine



eight



twelve



sixteen

